

VERSATILE • OPTIMAL • COMPACT



**Atomx XYZ**  
Automated VOC Sample Prep System

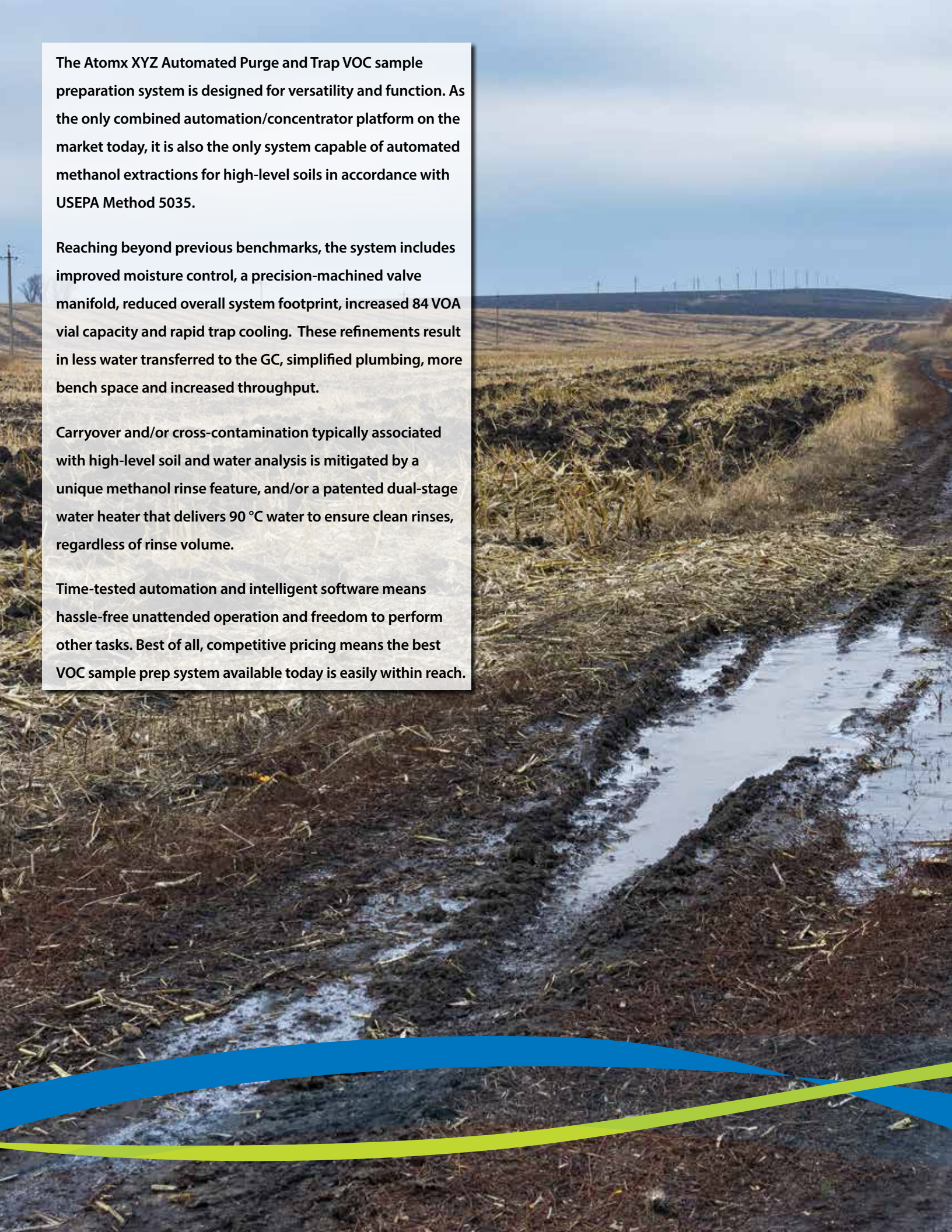


The Atomx XYZ Automated Purge and Trap VOC sample preparation system is designed for versatility and function. As the only combined automation/concentrator platform on the market today, it is also the only system capable of automated methanol extractions for high-level soils in accordance with USEPA Method 5035.

Reaching beyond previous benchmarks, the system includes improved moisture control, a precision-machined valve manifold, reduced overall system footprint, increased 84 VOA vial capacity and rapid trap cooling. These refinements result in less water transferred to the GC, simplified plumbing, more bench space and increased throughput.

Carryover and/or cross-contamination typically associated with high-level soil and water analysis is mitigated by a unique methanol rinse feature, and/or a patented dual-stage water heater that delivers 90 °C water to ensure clean rinses, regardless of rinse volume.

Time-tested automation and intelligent software means hassle-free unattended operation and freedom to perform other tasks. Best of all, competitive pricing means the best VOC sample prep system available today is easily within reach.





## Flexibility

The Atomx XYZ accommodates a variety of sample types including drinking water, wastewater, soils, and sludges. The three-stage (patented), single needle design is capable of transferring liquid sample aliquots from the vial to the sparger, as well as purging low-level solid samples directly in the vial. For high-level solids, the same needle is used to add methanol, mix, dilute and then extract to the sparger. Compliance with EPA Method 5035 is ensured by minimizing VOC loss by using a truly “closed” system. Surrogate standards can be added before and after extraction.

## Applications and Industries

VOC sampling and analysis are used in a wide range of applications in the following industries:

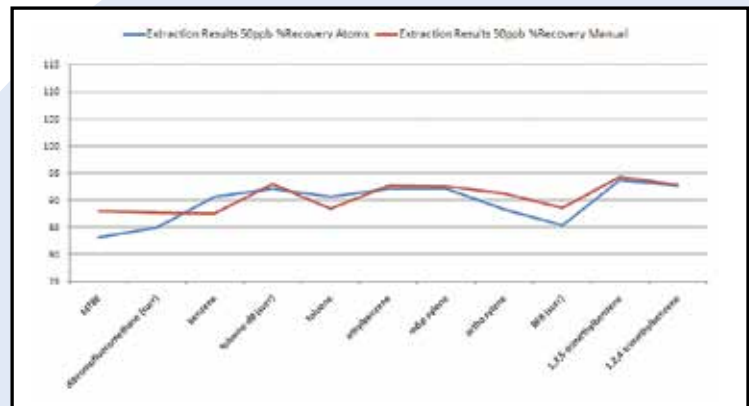
- Environmental
- Food and Beverage
- Pharmaceutical
- Flavor, Fragrance, and Packaging
- Petrochemical

## Methods

- USEPA 502.1, 502.2, 524.2, 524.3, 524.4, 503.1, 601, 602, 603, 624, 5035, 8010, 8015, 8020, 8021, 8030, 8240, 8260
- ASTM and Standard Methods
- Massachusetts VPH and GRO Methods

Atomx XYZ completely automates sample preparation and P&T steps including:

- Vial Handling
- Sample Volume Measurement
- Standard Injections
- Dilutions
- Rinsing
- Purging
- Desorption
- Baking



## Automated Methanol Extraction (ME): Trusted Results with Added Resources

Automating methanol extraction means freedom for the laboratory technician. In a side-by-side comparison, the Atomx XYZ's automated ME preparation generates results that match or exceed manual preparation.



#### Sample Elevator

The sample elevator includes a vial heater and variable speed mixer for in-vial samples and soils. A vial stripper bar eliminates the possibility of vial/sample needle interference.

#### Syringe Drive

Accurately dispenses sample volumes from 0 to 25 mL in 0.1 mL increments. Precision is ensured by purging air bubbles from the syringe valve with an aliquot of sample.

#### XYZ Automation

The quick, whisper-quiet arm has undergone years of refinement and testing to eliminate the issues typically associated with older XYZ autosampler platforms.

#### 84-Position Sample Tray

The 84-position sample tray loads quickly and increases capacity over previous models. A chiller tray option is also available.

#### Single Platform System

Combining the concentrator and soils/waters autosampler saves bench space and simplifies consumables, parts and service.

## Additional Features

**Automated Methanol Extraction (ME)**- Only system capable of sampling low and high-level soil samples (>200 ppb) and automating the methanol extraction process.

**Mass Flow Controller (MFC)** - The digital MFC (patented) provides independent programmable flow control and simplifies method optimization for water and soil sample types.



### Advanced Moisture Control System (MCS)

Designed to reduce water vapor transferred to the GC system by 50% over previous models. Efficient enough that dry purge time can be minimized and cycle time reduced.\*

### Simplified Trap Access

Ample analytical trap compartment with access door and easily reached trap connections make routine changes quick and easy.

### Improved Trap Cooling

Up to 22% faster than previous models due to a powerful fan and dedicated ducting that draws cool outside air, rather than heated air from within the instrument.

### Redesigned Valve Manifold

A precision-machined manifold reduces plumbing connections by 52% over previous designs and results in improved system reliability.



\*Actual moisture reduction is method dependent.

**Methanol Rinsing** – A unique methanol rinse reduces potential carryover by as much as 50% by cleaning the needle, sample lines, and glassware.

**Autodilution** - Capable of sample volume dilution up to 100 times (based on 5 and 25 mL sample volumes). This feature also has the ability to extract 50 or 100 µL volumes for ME requirements.



# Atomx XYZ TekLink™

## An Interface for All Levels of Users

Atomx XYZ TekLink™ was designed to provide a simple user interface underscored by precise control and monitoring. The software includes “out-of-box” default methods, but is equally adapted to creating exacting methods and complex schedule creation. Floating screens that can be “pinned” to the desktop create an uncluttered work environment where necessary information remains in view, while other screens are removed from sight. In the background, Atomx XYZ TekLink™ continuously monitors the analytical process to ensure that operating limits are not exceeded. When needed, automated Leak Check and Benchmark Test functions assist in troubleshooting and instrument validation.

#	User	Vial	Method	Type	STD1	STD2	STD3	Dil	Purge	Bake	Status
1		1	Default Water	Water	0	0	0	1	6.2	22.1	Completed
2		2	Default Water	Water	0	0	0	1	6.4	22.0	Completed
3		3	Default Water	Water	0	0	0	1	6.3	22.1	Completed
4		4	Default Water	Water	0	0	0	1	6.4	22.1	Completed
5		5	Default Water	Water	0	0	0	1	6.4	22.1	Completed
6		6	Default Water	Water	0	0	0	1	6.3	22.1	Completed
7		7	Default Water	Water	0	0	0	1	6.3	22.1	Completed
8		8	Default Water	Water	0	0	0	1	6.5	22.1	Completed
9		9	Default Water	Water	0	0	0	1	6.4	22.1	Completed
10		10	Default Water	Water	0	0	0	1	6.4	22.1	Completed
11		11	Default Water	Water	0	0	0	1	6.4	22.1	Completed
12		12	Default Water	Water	0	0	0	1	6.4	22.1	Completed

**Schedule Screen** - Auto-fill, drop-down and right-click functionality speeds schedule creation. Combine multiple methods, three internal standards and a variety of dilutions in one schedule. Real-time editing and revision.

Name	Current	Set Point
Mass Flow	10 mL/min	10 mL/min
Pressure	0.7 psig	n/a
Syringe	0.0 mL	0.0 mL
Transfer Line	139°C	140°C
Oven	140°C	140°C
Mount	90°C	90°C
Trap	23°C	Ambient
Sample Cup	24°C	Ambient
MCS	27°C	Ambient
Soil Valve	100°C	100°C
Water	89°C	90°C

**Instrument Status Screen** - Provides real-time monitoring of the analytical process including active method, current mode and a complete list of current and set instrument parameters.

Name	Value	Unit
Valve Oven Temp	140	°C
Transfer Line Temp	140	°C
Sample Mount Temp	90	°C
Water Heater Temp	90	°C
Soil Valve Temp	100	°C
Standby Flow	10	mL/min
Purge Ready Temp	40	°C

**Method Development Screen** - Load default water, soil, and methanol extraction methods for common applications or optimize parameters for specific sample types. Standby, Purge, Desorb, and Bake Tabs allow efficient review and revision of parameters. Parameter description and useful information are shown to the right of the tab.

NOTE: Use caution when using the motor diagnostics. Improper use can interfere with mechanical movement (M) and damage your system.

NOTE: Use caution when using the motor diagnostics. Improper use can interfere with mechanical movement (M) and damage your system.

**Diagnostics Options** - Direct control of system components along with automated Benchmark Test validation and System Leak Check. Maintenance wizards assist in syringe replacement/initialization and autosampler alignment.



# Atomx XYZ Specifications

## Automation

<b>Sample Capacity:</b>	84-positions for 40 mL VOA vials.
<b>Vial Size:</b>	Nominal 40 mL capacity, single hole cap with PTFE-faced silicone septum, per EPA specifications; 3 3/4" high without cap and septum; 1 1/16" OD; 24 mm ID cap for water sampling.

## Sample Handling

<b>Liquid Handling:</b>	Sample syringe (25 mL) dispenses variable volumes of water from 1 - 25 mL in 0.1 mL increments. 1/16" OD PEEK™ tubing for liquid transfer.
<b>Sample Gas Pathway:</b>	Glass, PEEK™ Inertium®, SilcoTek® and PTFE for sample handling.
<b>Cleaning:</b>	The entire liquid sample pathway can be rinsed using a combination of the methanol rinse and the high-temperature DI water rinse cleaning techniques. User defined rinse volume and number of rinses for the needle and glassware.

## Gas Handling

<b>Electronic MFC:</b>	System is capable of controlling flow rates between 5-500 mL/min variable between each mode of operation (patented).
<b>Pressure Monitoring:</b>	Ability to record purge and bake pressure for each sample.
<b>Gas Supply:</b>	Ultra-high purity (99.999%) Helium or Nitrogen; Incoming Pressure: 65 - 100 psig, (100 psig max)

## Standard Injection

<b>Standard Injection:</b>	Three standard injection systems utilizing 2-way dosing valves mounted on an internal valve manifold.
<b>Capacity:</b>	1, 2, 5, 10, and 20 µL increments.
<b>Consumption:</b>	1 µL per 1 µL injection
<b>Standard Vessels:</b>	Three 15 mL standard vessels, UV-protected and sealed under pressure for standard concentration integrity.

**Liquid Samples** - includes drinking water and wastewater; Liquid samples containing up to 15 mm of sediment when measured from the bottom of an upright 40 mL vial.

<b>Sample Glassware:</b>	The system is capable of operation with 5-25 mL frit or fritless sparge vessels. Ships standard with 5 mL fritted glassware.
<b>Sample Dilutions:</b>	Programmable automatic aqueous sample dilutions of 1:100, 1:50, 1:25, 1:10, 1:5, 1:2.
<b>Blanks:</b>	Automatic blanks can be pulled from the water reservoir and spiked with standard allowing all autosampler positions to be used for samples.
<b>Cycle Time:</b>	Total Purge & Trap cycle time of 18 minutes, or less depending on the method.

**Low-Level Solid Samples** - includes all types of natural soils and sediments. Sampled: Direct purge in the vial per USEPA 5035 low-level soil methodology.

<b>Sample Needle:</b>	A patented 3-stage needle allows for water and standards to be directly added to the vial where the solid sample will be purged.
<b>Vial Heater:</b>	Variable heat control from 35 °C to 80 °C.
<b>Mixing:</b>	The solid sample can be mixed via a stir bar using three variable speeds.

**High-Level Solid Samples** - includes all types of soils and sediments. Sampled: Automated Methanol Extraction and subsequent dilution per USEPA 5035 high-level soil methodology.

<b>Extraction:</b>	System is capable of fully automating the methanol extraction of high-concentration soil samples.
<b>Matrix Spike:</b>	The system is configured to allow a surrogate spike to be added directly to the solid sample when the methanol is added for the extraction.
<b>Extraction Dilutions:</b>	Programmable automatic dilutions of methanolic extract of 1:100 or 1:50 for 5 mL sample volumes.

## System Control

<b>Instrument Control:</b>	Atomx XYZ TekLink™ software in a Windows® 7 or greater environment. Via USB.
<b>Method Scheduling:</b>	All method types can be run from any position in the sample sequence. Up to three standards can be added to any user-specified position. Multiple runs can be made from the same vial (not recommended).
<b>System History:</b>	The system records a complete history of all sample, schedule and method information.

## Service

<b>Electronic Leak Check:</b>	Ability to leak check the entire sample pathway of the system via the automated System Leak Check. Built-in diagnostics that, once a leak has been identified, the system will check independent sub-systems for leaks.
<b>Benchmark Test:</b>	The system has a mode that will allow for full electromechanical testing including; valving, heaters, vial handling systems, liquid delivery system, inputs and outputs.
<b>Diagnostics:</b>	The system offers independent control of all valves, vial handling mechanisms and syringe drive for troubleshooting.

## General Specifications

<b>Dimensions &amp; Weight:</b>	Dimensions: 70.1 cm (27.6" W) X 58.42 cm (23" D) X 49.5 cm (19.5" H) Unit weight: 43.1 kg (95 lbs)
<b>Power Requirements:</b>	100-120VAC (±10%), 50/60 Hz, 10.0A, 1150W; 220-240VAC (±10%), 50/60 Hz, 5.0A, 1150W
<b>Environmental Specs:</b>	Operating Temperature: 10°-30 °C; Storage Temperature: -20°-60 °C; Relative Humidity: 10%-90%.
<b>Corrosion Resistance:</b>	The front cover and sample tray are corrosion resistant to waters with a pH range of 1-10.

## 禹重科技® UZONGLAB

成分分析仪器 | 表面测试仪器 | 样品前处理仪器

上海市闵行区春申路2525号芭洛商务大楼

电话：021-8039 4499 传真：021-5433 0867

上海|北京|沈阳|太原|长沙|广州|成都|青岛|香港

全国销售和售后服务电话：400-808-4598

邮编：201104, China

邮箱：shanghai@uzong.cn

更多信息请访问：[www.uzong.cn](http://www.uzong.cn)



了解我们



微信公众号



**TELEDYNE TEKMAR**  
Everywhere you look™

[www.teledynetekmar.com](http://www.teledynetekmar.com)



© 2018 Teledyne Technologies Incorporated  
4736 Socialville-Foster Rd. • Mason, OH 45040 USA  
Phone: (513) 229-7000  
90023\_2/18